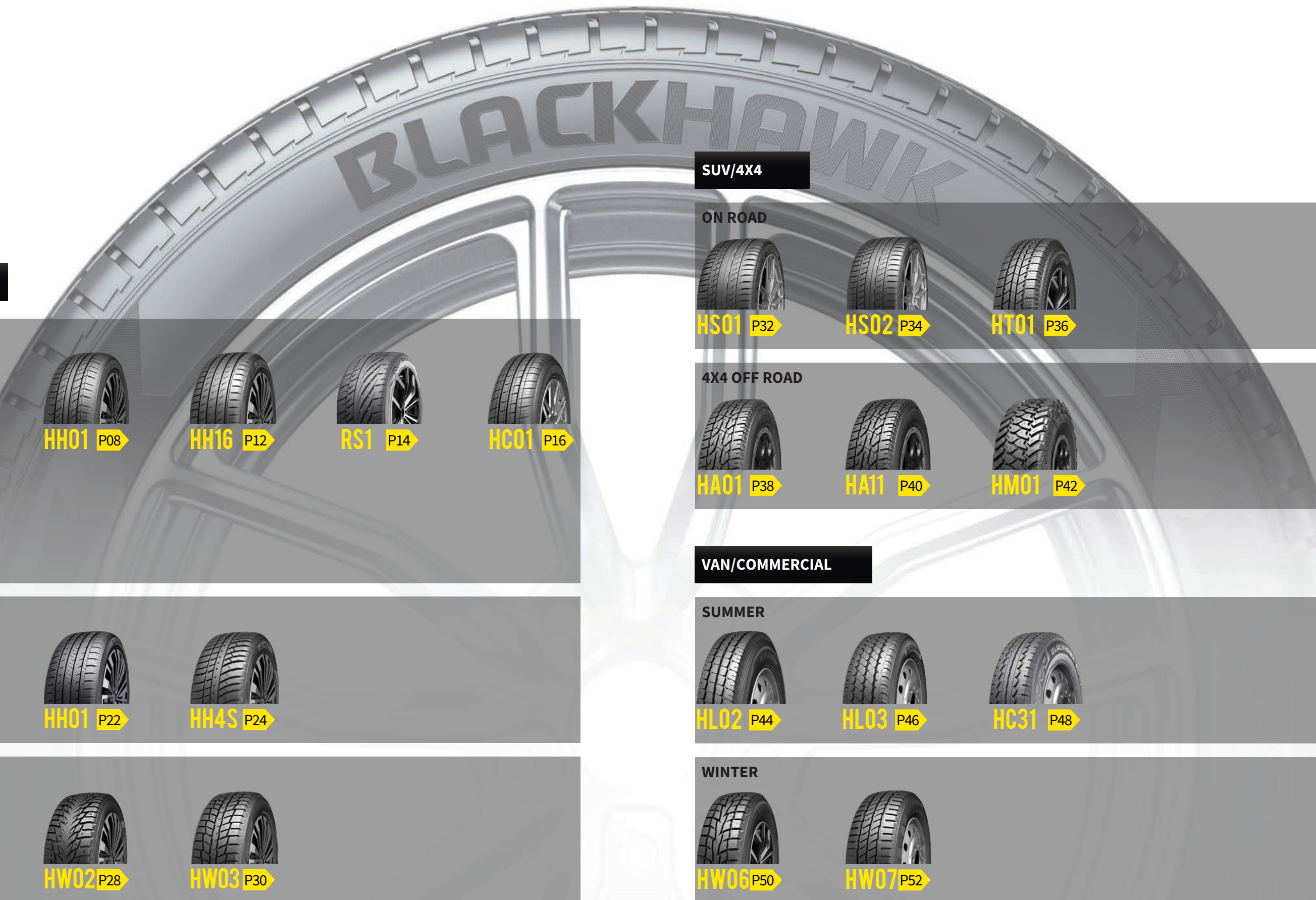


BLACKHAWK

THE ROAD IS YOUR PREY








PASSENGER & LIGHT TRUCK TIRE CATALOG






PASSENGER




SUMMER

-  **HU02 P04**
-  **HH01 P08**
-  **HH16 P12**
-  **RS1 P14**
-  **HC01 P16**
-  **HU71 P18**

ALL SEASON

-  **HU01 P20**
-  **HH01 P22**
-  **HH4S P24**

WINTER

-  **HW01 P26**
-  **HW02 P28**
-  **HW03 P30**

SUV/4X4

ON ROAD



HS01 P32



HS02 P34



HT01 P36

4X4 OFF ROAD



HA01 P38



HA11 P40



HM01 P42

VAN/COMMERCIAL

SUMMER



HL02 P44



HL03 P46



HC31 P48

WINTER



HW06 P50



HW07 P52



HU02

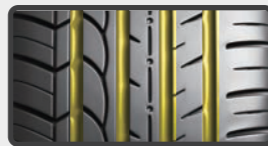
HU02's tread formulation is specially designed to ensure excellent rolling resistance as well as a stronger apex to prevent damage to the bead.



PATTERN DESIGN & FEATURES

Product Design

Product Performance



Wet Performance

The tread's four main grooves efficiently drain water for improved safety in wet weather conditions.



Handling Performance

The inner tread elements provide stronger grip on both wet and dry roads.



Shoulder Design

Aggressive high angle grooves enhance water drainage to improve wet handling and hydroplaning resistance.



SIZES



RIM	SIZE	PR	LI	SS	XL OR NOT	SIDEWALL	STANDARD RINM	UTQG	MAX LOAD (kg)	PRESSURE (kpa)	PLANT
16	205/45ZR16		87	W	XL	BSW	7J	300/AA/A	545	340	CN
16	205/50ZR16		87	W		BSW	6 1/2J	300/AA/A	545	300	CN
16	195/55R16		91	V	XL	BSW	6J	300/AA/A	615	340	CN
16	205/55ZR16		94	W	XL	BSW	6 1/2J	300/AA/A	670	340	CN
16	215/55ZR16		97	W	XL	BSW	7J	300/AA/A	730	340	CN
16	225/55ZR16		99	W	XL	BSW	7J	300/AA/A	775	340	CN/VN
16	205/60R16		92	V		BSW	6J	300/AA/A	630	300	CN
16	225/60R16		98	V		BSW	6 1/2J	300/AA/A	750	300	CN
16	235/60R16		100	V		BSW	7J	300/AA/A	800	300	CN
16	205/65R16		95	V		BSW	6J	300/AA/A	690	300	CN
17	205/40ZR17		84	W	XL	BSW	7 1/2J	300/AA/A	500	340	CN
17	215/40ZR17		87	W	XL	BSW	7 1/2J	300/AA/A	545	340	CN/VN
17	245/40ZR17		95	W	XL	BSW	8 1/2J	300/AA/A	690	340	CN/VN
17	205/45ZR17		88	W	XL	BSW	7J	300/AA/A	560	340	CN
17	215/45ZR17		91	W	XL	BSW	7J	300/AA/A	615	340	CN/VN
17	225/45ZR17		94	W	XL	BSW	7 1/2J	300/AA/A	670	340	CN/VN
17	235/45ZR17		97	W	XL	BSW	8J	300/AA/A	730	340	CN/VN
17	245/45ZR17		99	W	XL	BSW	8J	300/AA/A	775	340	CN
17	205/50ZR17		93	W	XL	BSW	6 1/2J	400/AA/A	650	340	CN/VN
17	215/50ZR17		95	W	XL	BSW	7J	300/AA/A	690	340	CN
17	225/50ZR17		98	W	XL	BSW	7J	300/AA/A	750	340	CN/VN
17	235/50ZR17		100	W	XL	BSW	7 1/2J	300/AA/A	800	340	CN
17	215/55ZR17		94	W		BSW	7J	300/AA/A	670	300	CN/VN/ KH
17	225/55ZR17		101	W	XL	BSW	7J	300/AA/A	825	340	CN/VN
17	235/55ZR17		103	W	XL	BSW	7 1/2J	300/AA/A	875	340	CN



SIZES



RIM	SIZE	PR	LI	SS	XL OR NOT	SIDEWALL	STANDARD RINM	UTQG	MAX LOAD (kg)	PRESSURE (kpa)	PLANT
18	215/35ZR18		84	Y	XL	BSW	7 1/2J	300/AA/A	500	340	CN
18	255/35ZR18		94	Y	XL	BSW	9J	300/AA/A	670	340	CN
18	205/40ZR18		82	W		BSW	7 1/2J	300/AA/A	475	300	CN
18	225/40ZR18		92	W	XL	BSW	8J	300/AA/A	630	340	CN/VN
18	235/40ZR18		95	W	XL	BSW	8 1/2J	300/AA/A	690	340	CN/VN
18	245/40ZR18		97	Y	XL	BSW	8 1/2J	300/AA/A	730	340	CN/VN
18	225/45ZR18		95	Y	XL	BSW	7 1/2J	300/AA/A	690	340	CN
18	235/45ZR18		98	Y	XL	BSW	8J	300/AA/A	750	340	CN
18	245/45ZR18		100	W	XL	BSW	8J	300/AA/A	800	340	CN/VN
18	235/50ZR18		101	W	XL	BSW	7 1/2J	300/AA/A	825	340	CN
19	265/30ZR19		93	Y	XL	BSW	9 1/2J	300/AA/A	650	340	CN
19	275/30ZR19		96	Y	XL	BSW	9 1/2J	300/AA/A	710	340	CN
19	225/35ZR19		88	Y	XL	BSW	8J	300/AA/A	560	340	CN
19	235/35ZR19		91	Y	XL	BSW	8 1/2J	300/AA/A	615	340	CN
19	245/35ZR19		93	Y	XL	BSW	8 1/2J	300/AA/A	650	340	CN
19	255/35ZR19		96	Y	XL	BSW	9J	300/AA/A	710	340	CN
19	275/35ZR19		100	Y	XL	BSW	9 1/2J	300/AA/A	800	340	CN
19	225/40ZR19		93	Y	XL	BSW	8J	300/AA/A	650	340	CN
19	245/40ZR19		98	Y	XL	BSW	8 1/2J	300/AA/A	750	340	CN
19	235/45ZR19		99	W	XL	BSW	8J	300/AA/A	775	340	CN
19	245/45ZR19		102	Y	XL	BSW	8J	300/AA/A	850	340	CN
19	275/45ZR19		108	Y	XL	BSW	9J	300/AA/A	1000	340	CN
19	285/45ZR19		111	Y	XL	BSW	9 1/2J	300/AA/A	1090	340	CN
19	255/50ZR19		107	Y	XL	BSW	8J	300/AA/A	975	340	CN
20	245/30ZR20		90	Y	XL	BSW	8 1/2J	300/AA/A	600	340	CN
20	245/30ZR20		95	Y	XL	BSW	8 1/2J	300/AA/A	690	340	CN

SIZES



RIM	SIZE	PR	LI	SS	XL OR NOT	SIDEWALL	STANDARD RINM	UTQG	MAX LOAD (kg)	PRESSURE (kpa)	PLANT
20	275/30ZR20		97	Y	XL	BSW	9 1/2J	300/AA/A	730	340	CN
20	225/35ZR20		90	Y	XL	BSW	8J	300/AA/A	600	340	CN
20	245/35ZR20		95	Y	XL	BSW	8 1/2J	300/AA/A	690	340	CN
20	275/40ZR20		106	Y	XL	BSW	9 1/2J	300/AA/A	950	340	CN
20	245/45ZR20		103	Y	XL	BSW	8J	300/AA/A	875	340	CN
20	255/45ZR20		105	Y	XL	BSW	8 1/2J	300/AA/A	925	340	CN
20	275/45ZR20		110	Y	XL	BSW	9J	300/AA/A	1060	340	CN
21	325/30ZR21		108	Y	XL	BSW	11 1/2J	300/AA/A	1000	340	CN
21	285/35ZR21		105	Y	XL	BSW	10J	300/AA/A	925	340	CN
21	295/35ZR21		107	Y	XL	BSW	10 1/2J	300/AA/A	975	340	CN
16	195/55RF16		91	V	XL	BSW	6J	300/A/A	615	340	CN
16	205/55ZRF16		94	W	XL	BSW	6 1/2J	300/AA/A	670	340	CN
16	225/55ZRF16		99	W	XL	BSW	7J	300/A/A	775	340	CN
17	225/45ZRF17		94	W	XL	BSW	7 1/2J	300/AA/A	670	340	CN
17	205/50ZRF17		93	W	XL	BSW	6 1/2J	400/A/A	650	340	CN
17	225/50ZRF17		98	W	XL	BSW	7J	300/A/A	750	340	CN
17	225/55ZRF17		101	W	XL	BSW	7J	300/AA/A	825	340	CN
18	225/40ZRF18		92	W	XL	BSW	8J	300/A/A	630	340	CN
18	245/40ZRF18		97	W	XL	BSW	8 1/2J	300/A/A	730	340	CN
18	225/45ZRF18		95	W	XL	BSW	7 1/2J	300/A/A	690	340	CN
18	245/45ZRF18		100	W	XL	BSW	8J	300/A/A	800	340	CN
18	245/50ZRF18		100	Y		BSW	7 1/2J	300/A/A	800	300	CN
19	235/45ZRF19		99	W	XL	BSW	8J	300/A/A	775	340	CN
19	245/45ZRF19		102	W	XL	BSW	8J	300/A/A	850	340	CN
19	255/50RF19		103	V		BSW	8J	300/A/A	875	300	CN



HH01

Excellent handling, superior comfort, high-speed stability and low running noise provide a great driving experience.



PATTERN DESIGN & FEATURES

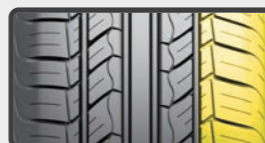
Product Design

Product Performance



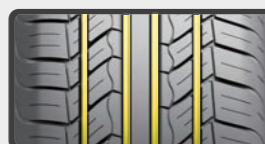
Tread Elements

The tread compound is designed to effectively reduce rolling resistance for an improved fuel economy. Tread pattern offers greater handling for a safer and more comfortable driving experience.



Noise Emission

The tread block pitch order and shoulder grooves effectively reduce running noise and ensure excellent performance.



Safety

The four main grooves and central rib are designed to provide excellent water drainage to improve driving performance for both wet and dry roads.

SIZES



RIM	SIZE	PR	LI	SS	XL OR NOT	SIDEWALL	STANDARD RINM	UTQG	MAX LOAD (kg)	PRESSURE (kpa)	PLANT
13	175/60R13		77	T		BSW	5.00B	420/A/A	412	300	CN
13	185/60R13		80	T		BSW	5.50B	420/A/A	450	300	CN
13	185/60R13		80	T		WR	5.50B	420/A/A	450	300	CN
13	165/65R13		77	T		BSW	5.00B	420/A/A	412	300	CN
13	165/70R13		83	T	XL	BSW	5.00B	420/A/A	487	340	CN
13	175/70R13		82	T		BSW	5.00B	420/A/A	475	300	CN
13	175/70R13		82	T		WR	5.00B	420/A/A	475	300	CN
13	185/70R13		86	T		BSW	5.50B	420/A/B	530	300	CN
14	165/60R14		75	H		BSW	5J	420/A/A	387	300	CN
14	175/60R14		79	H		BSW	5J	420/A/A	437	300	CN
14	185/60R14		82	H		BSW	5 1/2J	420/A/A	475	300	CN
14	195/60R14		86	H		BSW	6J	420/A/A	530	300	CN/VN
14	205/60R14		88	T		BSW	6J	420/A/A	560	300	CN
14	175/65R14		82	T		BSW	5J	420/A/A	475	300	CN
14	175/65R14		86	T	XL	BSW	5J	420/A/A	530	340	CN
14	175/65R14		86	T	XL	RWL	5J		530	340	CN
14	185/65R14		86	H		BSW	5 1/2J	420/A/A	530	300	CN
14	195/65R14		89	H		BSW	6J	420/A/A	580	300	CN/VN
14	165/70R14		85	T	XL	BSW	5J	420/A/A	515	340	CN
14	175/70R14		88	T	XL	BSW	5J	420/A/A	560	340	CN
14	185/70R14		88	H		BSW	5 1/2J	420/A/A	560	300	CN
14	195/70R14		91	T		BSW	6J	420/A/A	615	300	CN
14	205/70R14		95	T		BSW	6J	420/A/A	690	300	CN
14	205/70R14		98	T	XL	BSW	6J	420/A/A	750	340	CN/VN

SIZES



RIM	SIZE	PR	LI	SS	XL OR NOT	SIDEWALL	STANDARD RINM	UTQG	MAX LOAD (kg)	PRESSURE (kpa)	PLANT
15	195/50R15		82	V		BSW	6J	420/A/A	475	300	CN
15	185/55R15		82	V		BSW	6J	420/A/A	475	300	CN
15	195/55R15		85	V		BSW	6J	420/A/A	515	300	CN
15	185/60R15		84	H		BSW	5 1/2J	420/A/A	500	300	CN
15	185/60R15		88	H	XL	BSW	5 1/2J	420/A/A	560	340	CN
15	195/60R15		88	H		BSW	6J	420/A/A	560	300	CN
15	195/60R15		88	V		BSW	6J	420/A/A	560	300	CN
15	205/60R15		91	H		BSW	6J	420/A/A	615	300	CN
15	205/60R15		95	H	XL	BSW	6J	420/A/A	690	340	CN
15	215/60R15		94	H		BSW	6 1/2J	420/A/A	670	300	CN
15	225/60R15		96	V		BSW	6 1/2J	420/A/A	710	300	CN
15	175/65R15		84	H		BSW	5J	420/A/A	500	300	CN
15	185/65R15		88	H		BSW	5 1/2J	420/A/A	560	300	CN
15	185/65R15		92	H	XL	BSW	5 1/2J	420/A/A	630	340	CN
15	195/65R15		91	V		BSW	6J	420/A/A	615	300	CN
15	195/65R15		95	T	XL	BSW	6J	420/A/A	690	340	CN
15	205/65R15		94	H		BSW	6J	420/A/A	670	300	CN
15	205/65R15		94	V		BSW	6J	420/A/A	670	300	CN
15	215/65R15		96	H		BSW	6 1/2J	420/A/A	710	300	CN
15	215/65R15		96	V		BSW	6 1/2J	420/A/A	710	300	CN
15	205/70R15		96	T		BSW	6J	420/A/B	710	300	CN
15	215/70R15		98	H		BSW	6 1/2J	420/A/A	750	300	CN
16	195/50R16		88	V	XL	BSW	6J	420/A/A	560	340	CN
16	205/50R16		87	V		BSW	6 1/2J	420/A/A	545	300	CN
16	225/50R16		92	V		BSW	7J	420/A/A	630	300	CN/VN
16	205/55R16		91	V		BSW	6 1/2J	420/A/A	615	300	CN
16	215/55R16		97	H	XL	BSW	7J	420/A/A	730	340	CN

SIZES

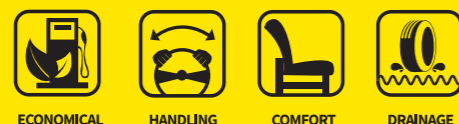


RIM	SIZE	PR	LI	SS	XL OR NOT	SIDEWALL	STANDARD RINM	UTQG	MAX LOAD (kg)	PRESSURE (kpa)	PLANT
16	195/60R16		89	V		BSW	6J	420/A/A	580	300	CN
16	205/60R16		92	H		BSW	6J	420/A/A	630	300	CN
16	205/60R16		92	V		BSW	6J	420/A/A	630	300	CN
16	215/60R16		95	H		BSW	6 1/2J	420/A/A	690	300	CN
16	215/60R16		95	V		BSW	6 1/2J	420/A/A	690	300	CN
16	225/60R16		98	H		BSW	6 1/2J	420/A/A	750	300	CN
16	205/65R16		95	H		BSW	6J	420/A/A	690	300	CN
16	215/65R16		98	T		BSW	6 1/2J	420/A/A	750	300	CN
16	235/65R16		103	H		BSW	7J	420/A/B	875	300	CN
17	215/45R17		91	W	XL	BSW	7J	420/A/A	615	340	CN
17	225/45R17		94	W	XL	BSW	7 1/2J	420/A/A	670	340	CN
17	235/45R17		97	W	XL	BSW	8J	420/A/A	730	340	CN
17	205/50R17		89	V		BSW	6 1/2J	420/A/A	580	300	CN
17	215/50R17		91	V		BSW	7J	420/A/A	615	300	CN
17	225/50R17		94	V		BSW	7J	420/A/A	670	300	CN
17	215/55R17		94	V		BSW	7J	420/A/A	670	300	CN
17	225/55R17		97	V		BSW	7J	420/A/A	730	300	CN
17	225/55R17		97	W		BSW	7J	420/A/A	730	300	CN
17	215/60R17		96	H		BSW	6 1/2J	420/A/A	710	300	CN
17	215/60R17		96	T		BSW	6 1/2J	420/A/A	710	300	CN
17	225/60R17		99	H		BSW	6 1/2J	420/A/A	775	300	CN
17	235/60R17		102	T		BSW	7J	420/A/A	850	300	CN
17	215/65R17		99	T		BSW	6 1/2J	420/A/B	775	300	CN
18	235/40R18		95	W	XL	BSW	8 1/2J	420/A/A	690	340	CN
18	235/55R18		100	V		BSW	7 1/2J	420/A/A	800	300	CN
18	235/60R18		103	H		BSW	7J	420/A/A	875	300	CN
18	235/60R18		107	V	XL	BSW	7J	420/A/A	975	340	CN



HH16

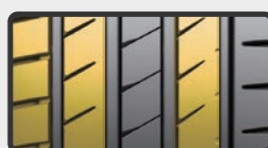
The HH16 is an HP product designed to improve driving comfort, performance at high speeds and on wet road conditions, and comes with a longer tire life.



PATTERN DESIGN & FEATURES

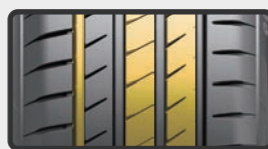
Product Design

Product Performance



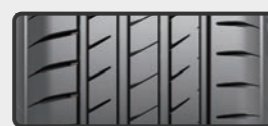
Driving Comfort

The tread is designed with varying pitches to effectively disperse noise vibrations allowing for a quiet and comfortable ride when driving at high speed.



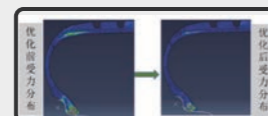
Handling Performance

Tread ribs utilize a cut section that offers better grip and handling stability. The thin outer groove connects the tire rib and shoulder for better durability, further improving handling stability.



Wet Performance

Two wide central grooves effectively expel water while the tread sipes break through water film for improved braking performance on wet roads.



Long Life

Optimized tread contour design effectively distributes ground pressure to promote even wear, offering a longer tire life.

SIZES



RIM	SIZE	PR	LI	SS	XL OR NOT	SIDEWALL	STANDARD RIM	UTQG	MAX LOAD (kg)	PRESSURE (kpa)	PLANT
15	195/55R15		85	V		BSW	6J	420/A/A	515	300	CN
15	185/60R15		84	H		BSW	5 1/2J	420/A/A	500	300	CN
15	195/60R15		88	V		BSW	6J	420/A/A	560	300	CN
15	185/65R15		88	H		BSW	5 1/2J	420/A/A	560	300	CN
15	195/65R15		91	V		BSW	6J	420/A/A	615	300	CN
15	205/65R15		94	V		BSW	6J	420/A/A	670	300	CN
16	205/55R16		94	V	XL	BSW	6 1/2J	420/A/A	670	340	CN
16	195/60R16		89	V		BSW	6J	420/A/A	580	300	CN
16	215/60R16		95	V		BSW	6 1/2J	420/A/A	690	300	CN
17	205/55R17		91	V		BSW	6 1/2J	420/A/A	615	300	CN
17	215/55R17		94	W		BSW	7J	420/A/A	670	300	CN
17	225/55R17		101	W	XL	BSW	7J	420/A/A	825	340	CN
17	235/55R17		103	V	XL	BSW	7 1/2J	420/A/A	875	340	CN

RS1

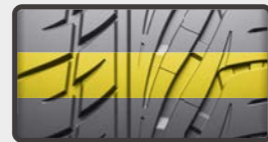
SPORT RS1 is a performance tire offering exceptional grip and handling, the first choice for car enthusiasts.



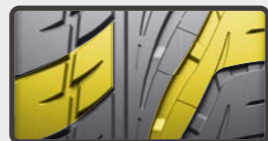
PATTERN DESIGN & FEATURES

Product Design

Product Performance



Driving Comfort
Wide tread and large tread to groove surface area greatly improves the tire's ground contact area, offering improved safety and handling stability.



Tread Pattern
Large tread blocks strengthen overall tire durability and improve handling stability.



Tread Design
Wide inner tread grooves paired with the flowing outer grooves effectively expels water to offer improved safety on wet roads.



SIZES



RIM	SIZE	PR	LI	SS	XL OR NOT	SIDEWALL	STANDARD RINM	UTQG	MAX LOAD (kg)	PRESSURE (kpa)	PLANT
18	295/40R18		103	V		BSW	10 1/2J	180/AA/A	875	300	CN
18	255/45R18		103	V	XL	BSW	8 1/2J		875	340	CN
18	255/55R18		109	V	XL	BSW	8J		1030	340	CN



HC01

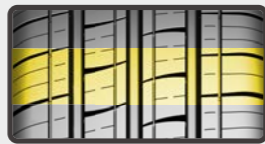
With a long service life and low rolling resistance HC01 is the perfect product for taxis and urban households.



PATTERN DESIGN & FEATURES

Product Design

Product Performance



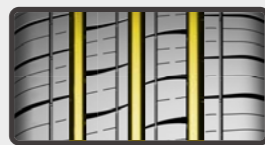
Fuel Economy

The silicon tread compound and reinforced shoulder design effectively reduce rolling resistance for improved fuel economy.



Long Tread Life

A wide tread surface, deep grooves, and scratch resistant shoulder improve abrasion resistance for a longer tread life.



Water Drainage

The wide main grooves effectively drain water for a safe ride on wet roads.



SIZES



RIM	SIZE	PR	LI	SS	XL OR NOT	SIDEWALL	STANDARD RINM	UTQG	MAX LOAD (kg)	PRESSURE (kpa)	PLANT
12	165/70R12		77	T		RWL	5.00B	620/A/A	412	300	CN
12	165/70R12		77	T		BSW	5.00B	620/A/A	412	300	CN

HU71

The next generation of UHP performance, the HU71 is designed for exceptional handling performance in wet and dry weather while also boasting a longer tread life.



PATTERN DESIGN & FEATURES

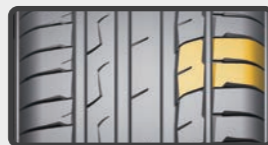
Product Design

Product Performance



Wet Performance

The optimized tread contour effectively expels water for better grip on wet roads.



Exceptional Handling

The interconnected tread shoulder improves shoulder durability for precision turning and handling performance.



Improved Durability

Tread body is equipped with a double-layer ply which helps to protect the sidewall, improve support and promote even tread wear.

SIZES



RIM	SIZE	PR	LI	SS	XL OR NOT	SIDEWALL	STANDARD RINM	UTQG	MAX LOAD (kg)	PRESSURE (kpa)	PLANT
16	215/55ZR16		97	W	XL	BSW	7J	420/A/A	730	340	CN
16	225/55ZR16		99	W	XL	BSW	7J	420/A/A	775	340	CN
17	215/45ZR17		91	Y	XL	BSW	7J	420/A/A	615	340	CN
17	225/45ZR17		94	Y	XL	BSW	7 1/2J	420/A/A	670	340	CN
17	235/45ZR17		97	Y	XL	BSW	8J	420/A/A	730	340	CN
17	215/50ZR17		95	W	XL	BSW	7J	420/A/A	690	340	CN
17	225/50ZR17		98	W	XL	BSW	7J	420/A/A	750	340	CN
17	215/55ZR17		98	W	XL	BSW	7J	420/A/A	750	340	CN
17	225/55ZR17		101	W	XL	BSW	7J	420/A/A	825	340	CN
18	245/40ZR18		97	Y	XL	BSW	8 1/2J	420/A/A	730	340	CN
18	225/45ZR18		95	Y	XL	BSW	7 1/2J	420/A/A	690	340	CN
18	235/45ZR18		98	Y	XL	BSW	8J	420/A/A	750	340	CN
18	245/45ZR18		100	Y	XL	BSW	8J	420/A/A	800	340	CN
19	245/45ZR19		102	Y	XL	BSW	8J	420/A/A	850	340	CN
20	275/45ZR20		110	Y	XL	BSW	9J	420/A/A	1060	340	CN

HU01

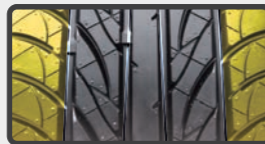
The STREET-H HU01 is an ultra-high performance all-season tire, designed for performance under all weather conditions.



PATTERN DESIGN & FEATURES

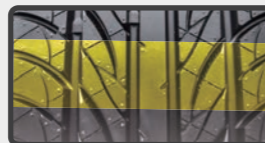
Product Design

Product Performance



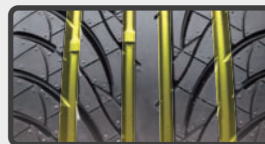
Tapered Tread Edges

Promotes uniform contact pressure for improved stability.



Tread Block Design

The tread blocks are grooved to reinforce block stiffness, promote even load distribution, and improve handling and tread wear.



Groove Design

Aggressive high angle grooves enhance water drainage to improve wet handling and hydroplaning resistance.

SIZES



RIM	SIZE	PR	LI	SS	XL OR NOT	SIDEWALL	STANDARD RIMM	UTQG	MAX LOAD (kg)	PRESSURE (kpa)	PLANT
16	205/50ZR16		87	W		BSW	6 1/2J	480/AA/A	545	300	VN
16	225/50ZR16		92	W		BSW	7J	480/AA/A	630	300	VN
16	205/55ZR16		91	W		BSW	6 1/2J	480/AA/A	615	300	VN
16	215/55ZR16		97	W	XL	BSW	7J	480/AA/A	730	340	VN
16	225/55ZR16		99	W	XL	BSW	7J	480/AA/A	775	340	VN
17	205/40ZR17		84	W	XL	BSW	7 1/2J	480/AA/A	500	340	VN
17	245/40ZR17		95	W	XL	BSW	8 1/2J	480/AA/A	690	340	VN
17	205/45ZR17		84	W		BSW	7J	480/AA/A	500	300	VN
17	215/45ZR17		91	W	XL	BSW	7J	480/AA/A	615	340	VN
17	225/45ZR17		94	W	XL	BSW	7 1/2J	480/AA/A	670	340	VN
17	235/45ZR17		97	W	XL	BSW	8J	480/AA/A	730	340	VN
17	245/45ZR17		99	W	XL	BSW	8J	480/AA/A	775	340	VN
17	205/50ZR17		93	W	XL	BSW	6 1/2J	480/AA/A	650	340	VN
17	215/50ZR17		95	W	XL	BSW	7J	480/AA/A	690	340	VN
17	225/50ZR17		98	W	XL	BSW	7J	480/AA/A	750	340	VN
17	215/55ZR17		98	W	XL	BSW	7J	480/AA/A	750	340	VN
17	225/55ZR17		101	W	XL	BSW	7J	480/AA/A	825	340	VN
17	235/55ZR17		99	W		BSW	7 1/2J	480/AA/A	775	300	VN
18	215/35ZR18		84	W	XL	BSW	7 1/2J	480/AA/A	500	340	VN
18	225/40ZR18		92	W	XL	BSW	8J	480/AA/A	630	340	VN
18	235/40ZR18		95	W	XL	BSW	8 1/2J	480/AA/A	690	340	VN
18	245/40ZR18		97	W	XL	BSW	8 1/2J	480/AA/A	730	340	VN
18	225/45ZR18		95	W	XL	BSW	7 1/2J	480/AA/A	690	340	VN
18	245/45ZR18		100	W	XL	BSW	8J	480/AA/A	800	340	VN
18	255/45ZR18		103	W	XL	BSW	8 1/2J	480/AA/A	875	340	VN
18	235/50ZR18		101	W	XL	BSW	7 1/2J	480/AA/A	825	340	VN/KN
19	235/40R19		96	V	XL	BSW	8 1/2J	480/AA/A	710	340	VN
19	245/40ZR19		98	W	XL	BSW	8 1/2J	480/AA/A	750	340	VN
19	245/45ZR19		98	W		BSW	8J	480/AA/A	750	300	VN
20	245/35ZR20		95	W	XL	BSW	8 1/2J	480/AA/A	690	340	VN
20	255/35ZR20		97	W	XL	BSW	9J	480/AA/A	730	340	VN
20	275/40ZR20		106	W	XL	BSW	9 1/2J	480/AA/A	950	340	VN
20	245/45ZR20		103	W	XL	BSW	8J	480/AA/A	875	340	VN



HH11

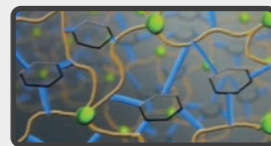
The STREET-H HH11 is a high-performance tire that uses the latest tread formula with a strong tire structure and advanced tread pattern design. It can be used in various road and weather conditions, offering a smooth ride and better handling with higher mileage.



PATTERN DESIGN & FEATURES

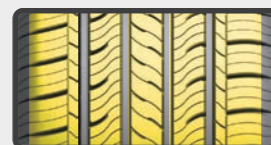
Product Design

Product Performance



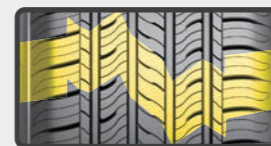
Higher Mileage

The tread compound is designed to improve overall wear resistance for greater fuel economy.



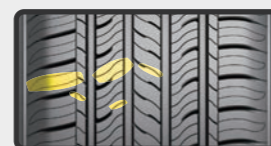
Handling Stability

Three evenly distributed designs and large shoulder tread blocks combine to increase the overall tire footprint. These details help to improve overall mileage and handling performance.



Driving Comfort

The optimized tread pitch arrangement better absorbs vibrations for a more comfortable ride.



Wet Performance

Tread sipes effectively break through water film to ensure greater grip on wet roads.



SIZES



RIM	SIZE	PR	LI	SS	XL OR NOT	SIDEWALL	STANDARD RINM	UTQG	MAX LOAD (kg)	PRESSURE (kpa)	PLANT
12	155/70R12		73	T		BSW	4.50B	420/A/A	365	300	VN
13	165/60R13		73	H		BSW	5.00B	420/A/A	365	300	VN
13	155/70R13		75	T		BSW	4.50B	420/A/A	387	300	VN
13	175/70R13		82	T		BSW	5.00B	420/A/A	475	300	VN
14	165/55R14		72	H		BSW	5J	420/A/A	355	300	VN
14	185/60R14		82	H		BSW	5 1/2J	420/A/A	475	300	VN
14	175/65R14		86	T	XL	BSW	5J	420/A/A	530	340	VN
14	185/65R14		86	H		BSW	5 1/2J	420/A/A	530	300	VN
14	175/70R14		84	T		BSW	5J	420/A/A	500	300	VN
14	185/70R14		88	H		BSW	5 1/2J	420/A/A	560	300	VN
14	195/70R14		91	T		BSW	6J	420/A/A	615	300	VN
15	165/50R15		76	H	XL	BSW	5J	420/A/A	400	340	VN
15	175/50R15		75	H		BSW	5 1/2J	420/A/A	387	300	VN
15	195/50R15		82	V		BSW	6J	420/A/A	475	300	VN
15	195/50R15		86	V	XL	BSW	6J		530	340	VN
15	185/55R15		82	V		BSW	6J	420/A/A	475	300	VN
15	195/55R15		85	V		BSW	6J	420/A/A	515	300	VN
15	175/60R15		81	H		BSW	5J	420/A/A	462	300	VN
15	185/60R15		88	H	XL	BSW	5 1/2J	420/A/A	560	340	VN
15	195/60R15		88	H		BSW	6J	420/A/A	560	300	VN
15	205/60R15		95	H	XL	BSW	6J	420/A/A	690	340	VN
15	215/60R15		94	H		BSW	6 1/2J	420/A/A	670	300	VN
15	185/65R15		92	H	XL	BSW	5 1/2J	420/A/A	630	340	VN
15	195/65R15		91	H		BSW	6J	420/A/A	615	300	VN
15	205/65R15		94	H		BSW	6J	420/A/A	670	300	VN
15	215/65R15		96	H		BSW	6 1/2J	420/A/A	710	300	VN
15	205/70R15		96	T		BSW	6J	420/A/A	710	300	VN
15	215/70R15		98	T		BSW	6 1/2J	420/A/A	750	300	VN
16	205/50R16		87	H		BSW	6 1/2J	420/A/A	545	300	VN
16	205/55R16		91	H		BSW	6 1/2J	420/A/A	615	300	VN/KH
16	205/55R16		94	V	XL	BSW	6 1/2J	420/A/A	670	340	VN/KH
16	215/55R16		97	H	XL	BSW	7J	420/A/A	730	340	VN
16	205/60R16		92	H		BSW	6J	420/A/A	630	300	VN
16	215/60R16		95	H		BSW	6 1/2J	420/A/A	690	300	VN/KH
16	225/60R16		98	H		BSW	6 1/2J	420/A/A	750	300	VN
16	205/65R16		95	H		BSW	6J	420/A/A	690	300	VN
16	215/65R16		98	T		BSW	6 1/2J	420/A/A	750	300	VN
16	225/65R16		100	H		BSW	6 1/2J	420/A/A	800	300	VN
17	215/45R17		87	W		BSW	7J	420/A/A	545	300	VN
17	225/45R17		91	V		BSW	7 1/2J	420/A/A	615	300	VN
17	205/50R17		89	V		BSW	6 1/2J	420/A/A	580	300	VN
17	215/50R17		91	V		BSW	7J	420/A/A	615	300	VN
17	225/50R17		94	V		BSW	7J	420/A/A	670	300	VN
17	215/55R17		94	V		BSW	7J	420/A/A	670	300	VN/KH
17	225/55R17		97	V		BSW	7J	420/A/A	730	300	VN
17	225/55R17		97	W		BSW	7J	420/A/A	730	300	VN
17	215/60R17		96	T		BSW	6 1/2J	420/A/A	710	300	VN
17	225/60R17		99	H		BSW	6 1/2J	420/A/A	775	300	VN
17	235/60R17		102	T		BSW	7J	420/A/A	850	300	VN
17	215/65R17		99	T		BSW	6 1/2J	420/A/A	775	300	VN
18	225/45R18		95	W	XL	BSW	7 1/2J	420/A/A	690	340	VN
18	235/45R18		94	V		BSW	8J	420/A/A	670	300	VN
18	235/55R18		100	V		BSW	7 1/2J	420/A/A	800	300	VN
18	235/60R18		103	H		BSW	7J	420/A/A	875	300	VN

HH4S



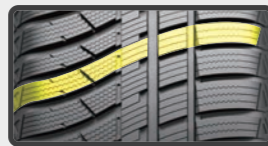
Specially designed all season tire .



PATTERN DESIGN & FEATURES

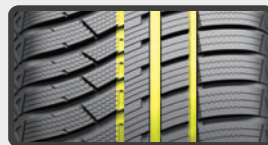
Product Design

Product Performance



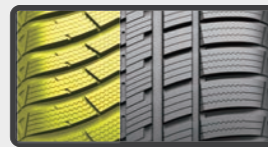
Noise Emissions

Tread pitch is designed to effectively reduce noise emissions for a quiet driving experience.



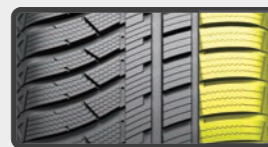
All-Season Versatility

Tread and groove design ensures handling, grip, and stability for all seasons.



Inner Tread

Improved handling on wet and snowy roads while also improving grip and braking efficiency.



Outer Tread

Improved handling and stability on dry roads.

SIZES



RIM	SIZE	PR	LI	SS	XL OR NOT	SIDEWALL	STANDARD RINM	UTQG	MAX LOAD (kg)	PRESSURE (kpa)	PLANT
13	155/70R13		75	T		BSW	4.50B	300/A/A	387	300	CN
13	155/80R13		79	T		BSW	4.50B	300/A/A	437	300	CN
14	165/60R14		79	H	XL	BSW	5J	300/A/A	437	340	CN
14	185/60R14		82	T		BSW	5 1/2J	300/A/A	475	300	CN
14	155/65R14		75	T		BSW	4 1/2J	300/A/A	387	300	CN
14	165/65R14		79	T		BSW	5J	300/A/A	437	300	CN
14	175/65R14		82	T		BSW	5J	300/A/A	475	300	CN
14	185/65R14		86	T		BSW	5 1/2J	300/A/A	530	300	CN
14	175/70R14		88	T	XL	BSW	5J	300/A/A	560	340	CN
15	195/50R15		82	H		BSW	6J	300/A/A	475	300	CN
15	185/55R15		82	H		BSW	6J	300/A/A	475	300	CN
15	195/55R15		85	H		BSW	6J	300/A/A	515	300	CN
15	185/60R15		88	H	XL	BSW	5 1/2J	300/A/A	560	340	CN
15	195/60R15		88	H		BSW	6J	300/A/A	560	300	CN
15	175/65R15		84	H		BSW	5J	300/A/A	500	300	CN
15	185/65R15		88	H		BSW	5 1/2J	300/A/A	560	300	CN
15	195/65R15		91	H		BSW	6J	300/A/A	615	300	CN
16	205/45R16		87	V	XL	BSW	7J	300/A/A	545	340	CN
16	195/55R16		87	V		BSW	6J	300/A/A	545	300	CN
16	205/55R16		94	H	XL	BSW	6 1/2J	300/A/A	670	340	CN
16	215/55R16		97	V	XL	BSW	7J	300/A/A	730	340	CN
16	225/55R16		99	V	XL	BSW	7J	300/A/A	775	340	CN
16	205/60R16		96	V	XL	BSW	6J	300/A/A	710	340	CN
16	215/60R16		99	V	XL	BSW	6 1/2J	300/A/A	775	340	CN
17	225/45R17		94	V	XL	BSW	7 1/2J	300/A/A	670	340	CN
17	205/50R17		93	V	XL	BSW	6 1/2J	300/A/A	650	340	CN
17	225/50R17		98	V	XL	BSW	7J	300/A/A	750	340	CN
17	225/65R17		102	T		BSW	6 1/2J	300/A/A	850	300	CN



HW01

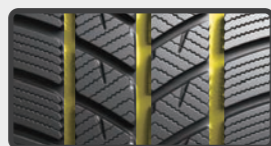


The special tread compound improves traction performance on snow and ice.



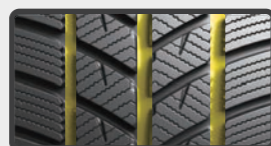
PATTERN DESIGN & FEATURES

Product Design	Product Performance
----------------	---------------------



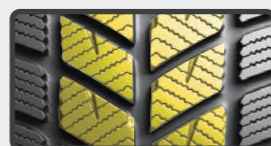
Handling

Wide tread and grooves improve handling on both ice and snow.



Groove Design

The sawtooth design on the edge of the grooves provides greater traction on snow and ice.



Winter Safety

V-shaped tread effectively expels water while the tread's winter compound maintains flexibility and improves wear resistance.

SIZES



RIM	SIZE	PR	LI	SS	XL OR NOT	SIDEWALL	STANDARD RINM	UTQG	MAX LOAD (kg)	PRESSURE (kpa)	PLANT
13	155/70R13		75	T		BSW	4.50B		387	300	CN
13	165/70R13		83	T	XL	BSW	5.00B		487	340	CN
13	175/70R13		86	T	XL	BSW	5.00B		530	340	CN
14	185/60R14		82	T		BSW	5 1/2J		475	300	CN
14	195/60R14		86	T		BSW	6J		530	300	CN
14	165/65R14		79	T		BSW	5J		437	300	CN
14	175/65R14		86	T	XL	BSW	5J		530	340	CN
14	185/65R14		86	T		BSW	5 1/2J		530	300	CN
14	175/70R14		88	T	XL	BSW	5J		560	340	CN
14	185/70R14		92	T	XL	BSW	5 1/2J		630	340	CN
14	205/70R14		98	T	XL	BSW	6J		750	340	CN
15	185/55R15		86	H	XL	BSW	6J		530	340	CN
15	195/55R15		89	H	XL	BSW	6J		580	340	CN
15	185/60R15		88	H	XL	BSW	5 1/2J		560	340	CN
15	195/60R15		88	T		BSW	6J		560	300	CN
15	205/60R15		91	H		BSW	6J		615	300	CN
15	175/65R15		88	H	XL	BSW	5J		560	340	CN
15	185/65R15		88	T		BSW	5 1/2J		560	300	CN
15	195/65R15		95	T	XL	BSW	6J		690	340	CN
15	205/65R15		94	H		BSW	6J		670	300	CN
15	205/70R15		96	T		BSW	6J		710	300	CN
16	195/45R16		84	H	XL	BSW	6 1/2J		500	340	CN
16	195/55R16		87	H		BSW	6J		545	300	CN
16	205/55R16		94	H	XL	BSW	6 1/2J		670	340	CN
16	215/55R16		97	H	XL	BSW	7J		730	340	CN
16	225/55R16		99	H	XL	BSW	7J		775	340	CN
16	205/60R16		92	H		BSW	6J		630	300	CN
16	215/60R16		99	H	XL	BSW	6 1/2J		775	340	CN
16	225/60R16		98	H		BSW	6 1/2J		750	300	CN
16	215/65R16		98	H		BSW	6 1/2J		750	300	CN
17	215/45R17		87	H		BSW	7J		545	300	CN
17	225/45R17		94	H	XL	BSW	7 1/2J		670	340	CN
17	235/45R17		94	H		BSW	8J		670	300	CN
17	245/45R17		99	V	XL	BSW	8J		775	340	CN
17	205/50R17		93	V	XL	BSW	6 1/2J		650	340	CN
17	225/50R17		94	H		BSW	7J		670	300	CN
17	215/55R17		94	H		BSW	7J		670	300	CN
17	225/60R17		103	H	XL	BSW	6 1/2J		875	340	CN
17	225/65R17		102	S		BSW	6 1/2J		850	300	CN
18	225/40R18		92	H	XL	BSW	8J		630	340	CN
18	225/45R18		95	V	XL	BSW	7 1/2J		690	340	CN
18	235/50R18		101	V	XL	BSW	7 1/2J		825	340	CN



HW02



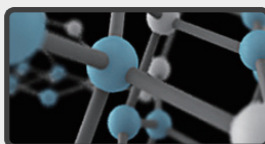
Specially developed HW02 employs a special pattern construction and tread compound to enhance driving safety and performance in extreme winter weather conditions.



PATTERN DESIGN & FEATURES

Product Design

Product Performance



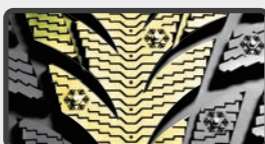
Winter Tread

The tread utilizes a winter specific compound that provides consistent performance for winter weather driving.



Ice Grip

The tread studs are designed in a pattern to provide better performance on ice and reduce tire vibration.



Winter Design

This directional pattern is equipped with dense sipes to deliver excellent performance in all winter conditions.

SIZES



RIM	SIZE	PR	LI	SS	XL OR NOT	SIDEWALL	STANDARD RINM	UTQG	MAX LOAD (kg)	PRESSURE (kpa)	PLANT
13	175/70R13		82	T		BSW	5.00B		475	300	CN
14	175/65R14		82	H		BSW	5J		475	300	CN
14	185/65R14		86	T		BSW	5 1/2J		530	300	CN
14	175/70R14		88	T	XL	BSW	5J		560	340	CN
14	185/70R14		92	T	XL	BSW	5 1/2J		630	340	CN
15	195/60R15		88	T		BSW	6J		560	300	CN
15	185/65R15		88	T		BSW	5 1/2J		560	300	CN
15	195/65R15		91	T		BSW	6J		615	300	CN
15	205/65R15		94	H		BSW	6J		670	300	CN
15	205/70R15		96	T		BSW	6J		710	300	CN
16	205/55R16		91	H		BSW	6 1/2J		615	300	CN
16	205/60R16		96	H	XL	BSW	6J		710	340	CN
16	215/60R16		99	H	XL	BSW	6 1/2J		775	340	CN
16	215/65R16		98	H		BSW	6 1/2J		750	300	CN
16	215/70R16		100	S		BSW	6 1/2J		800	300	CN
17	215/50R17		91	T		BSW	7J		615	300	CN
17	215/60R17		96	S		BSW	6 1/2J		710	300	CN
17	225/65R17		102	S		BSW	6 1/2J		850	300	CN
17	235/65R17		104	S		BSW	7J		900	300	CN
17	265/65R17		112	S		BSW	8J		1120	300	CN





HW03



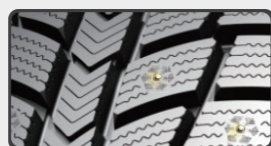
All new cold and soft tread compound improves grip on icy and wet roads. The optimized traction performance is designed to improve overall driving safety.



PATTERN DESIGN & FEATURES

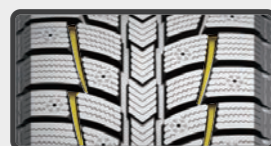
Product Design

Product Performance



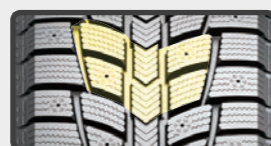
Stud Arrangement

The 12 row stud arrangement increases grip distribution and traction to reduce skidding for an overall safer drive in winter weather conditions.



Winter Handling

The triangular serrated edges on the sides of the groove and large contact area effectively improve grip on ice and snow.



Tread Design

The unique sipe design offers excellent grip on ice while the tread compound maintains softness in extreme cold for greater driving capabilities on ice and snow.



SIZES

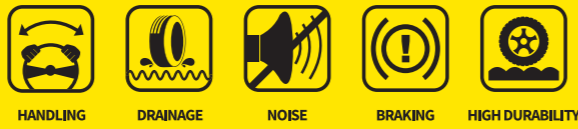


RIM	SIZE	PR	LI	SS	XL OR NOT	SIDEWALL	STANDARD RINM	UTQG	MAX LOAD (kg)	PRESSURE (kpa)	PLANT
15	185/55R15		82	T		BSW	6J		475	300	CN
15	195/55R15		85	H		BSW	6J		515	300	CN
15	185/60R15		84	T		BSW	5 1/2J		500	300	CN
15	175/65R15		84	T		BSW	5J		500	300	CN
15	215/70R15		98	T		BSW	6 1/2J		750	300	CN
16	215/55R16		97	H	XL	BSW	7J		730	340	CN
16	225/60R16		98	T		BSW	6 1/2J		750	300	CN
16	205/65R16		95	T		BSW	6J		690	300	CN
16	225/65R16		100	T		BSW	6 1/2J		800	300	CN
16	235/65R16		103	T		BSW	7J		875	300	CN
17	215/45R17		91	T	XL	BSW	7J		615	340	CN
17	225/45R17		94	H	XL	BSW	7 1/2J		670	340	CN
17	235/45R17		97	T	XL	BSW	8J		730	340	CN
17	205/50R17		93	H	XL	BSW	6 1/2J		650	340	CN
17	225/50R17		98	H	XL	BSW	7J		750	340	CN
17	215/55R17		94	T		BSW	7J		670	300	CN
17	225/55R17		97	T		BSW	7J		730	300	CN
17	235/55R17		99	H		BSW	7 1/2J		775	300	CN
17	225/60R17		99	T		BSW	6 1/2J		775	300	CN
17	235/60R17		102	T		BSW	7J		850	300	CN
17	215/65R17		99	T		BSW	6 1/2J		775	300	CN
18	225/40R18		92	H	XL	BSW	8J		630	340	CN
18	245/40R18		97	H	XL	BSW	8 1/2J		730	340	CN
18	215/45R18		93	H	XL	BSW	7J		650	340	CN
18	225/45R18		95	T	XL	BSW	7 1/2J		690	340	CN
18	235/50R18		101	H	XL	BSW	7 1/2J		825	340	CN
18	215/55R18		95	T		BSW	7J		690	300	CN
18	225/55R18		98	T		BSW	7J		750	300	CN
18	225/60R18		100	T		BSW	6 1/2J		800	300	CN



HS01

Specially designed UHP SUV tire.



PATTERN DESIGN & FEATURES

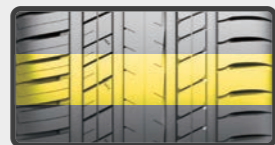
Product Design

Product Performance



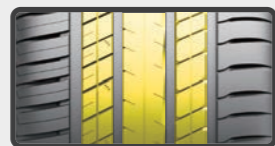
Safety

The center rib design provides greater traction for safer acceleration and braking.



Wear Resistance

The silicon compound tread improves wear resistance.



Comfortable Ride

The tread block pitch and built-in sipes reduce tire vibration and noise for a more comfortable ride.



SIZES



RIM	SIZE	PR	LI	SS	XL OR NOT	SIDEWALL	STANDARD RIMM	UTQG	MAX LOAD (kg)	PRESSURE (kpa)	PLANT
17	235/55R17		103	W	XL	BSW	7 1/2J	280/AA/A	875	340	CN
18	275/40R18		103	W	XL	BSW	9 1/2J	280/AA/A	875	340	CN
18	235/50R18		97	V		BSW	7 1/2J	280/AA/A	730	300	CN
18	225/55R18		102	W	XL	BSW	7J	280/AA/A	850	340	CN
18	235/55R18		104	W	XL	BSW	7 1/2J	280/AA/A	900	340	CN
18	255/55R18		109	Y	XL	BSW	8J	280/AA/A	1030	340	CN
18	225/60R18		100	V		BSW	6 1/2J	280/AA/A	800	300	CN
18	235/60R18		107	W	XL	BSW	7J	280/AA/A	975	340	CN
18	245/60R18		105	V		BSW	7J	280/AA/B	925	300	CN
18	255/60R18		112	V	XL	BSW	7 1/2J	280/AA/B	1120	340	CN
18	265/60R18		110	V		BSW	8J	280/AA/B	1060	300	CN
19	225/45R19		96	W	XL	BSW	7 1/2J	280/AA/A	710	340	CN
19	265/50R19		110	Y	XL	BSW	8 1/2J	280/AA/A	1060	340	CN
19	235/55R19		101	W		BSW	7 1/2J	280/AA/A	825	300	CN
19	245/55R19		103	V		BSW	7 1/2J	280/AA/A	875	300	CN
19	255/55R19		111	Y	XL	BSW	8J	280/AA/A	1090	340	CN
20	275/35R20		102	W	XL	BSW	9 1/2J	280/AA/A	850	340	CN
20	295/35R20		105	Y	XL	BSW	10 1/2J	280/AA/A	925	340	CN
20	255/40R20		101	Y	XL	BSW	9J	280/AA/A	825	340	CN
20	285/40R20		104	Y		BSW	10J	280/AA/A	900	300	CN
20	255/45R20		105	Y	XL	BSW	8 1/2J	280/AA/A	925	340	CN
20	255/50R20		109	Y	XL	BSW	8J	280/AA/A	1030	340	CN
20	265/50R20		111	Y	XL	BSW	8 1/2J	280/AA/A	1090	340	CN
20	285/50R20		116	W	XL	BSW	9J	280/AA/A	1250	340	CN
20	255/55R20		110	Y	XL	BSW	8J	280/AA/A	1060	340	CN
20	275/55R20		117	W	XL	BSW	8 1/2J	280/AA/A	1285	340	CN
20	275/60R20		119	V	XL	BSW	8J	280/AA/B	1360	340	CN
21	275/45R21		110	Y	XL	BSW	9J	280/AA/A	1060	340	CN
22	305/40R22		114	W	XL	BSW	11J	280/AA/A	1180	340	CN
22	285/45R22		114	W	XL	BSW	9 1/2J	280/AA/A	1180	340	CN
22	305/45R22		118	W	XL	BSW	10J	280/AA/A	1320	340	CN



HS02

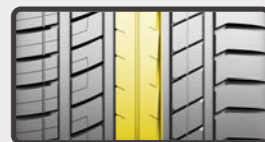
A UHP sport SUV product with an offset lateral arrangement block pattern and fine groove design that effectively reduce noise and improve driving comfort.



PATTERN DESIGN & FEATURES

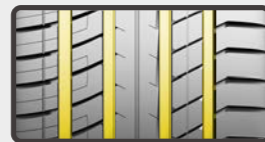
Product Design

Product Performance



Safety

The wide center rib design offers great traction when accelerating and braking for a safe driving experience.



Wear Resistance

The greater ratio of grooves provide better drainage capabilities for improved handling and grip in wet weather conditions. The tread compound also provides greater wet grip and reduces rolling resistance.



Block Design

An optimized pitch and sipe pattern arrangement effectively reduce noise for a more comfortable ride.

SIZES



RIM	SIZE	PR	LI	SS	XL OR NOT	SIDEWALL	STANDARD RINM	UTQG	MAX LOAD (kg)	PRESSURE (kpa)	PLANT
17	255/60R17		106	H		BSW	7 1/2J	500/A/A	950	300	CN
18	235/50R18		97	V		BSW	7 1/2J	280/AA/A	730	300	CN
18	225/60R18		100	V		BSW	6 1/2J	500/A/A	800	300	CN
19	235/50R19		103	W	XL	BSW	7 1/2J	500/A/A	875	340	CN
19	235/55R19		101	W		BSW	7 1/2J	500/A/A	825	300	CN
19	245/55R19		103	V		BSW	7 1/2J	280/AA/A	875	300	CN
22	305/40R22		114	W	XL	BSW	11J	280/AA/A	1180	340	CN
18	235/50RF18		97	V		BSW	7 1/2J	280/A/A	730	300	CN
18	255/55RF18		105	H		BSW	8J	280/A/A	925	300	CN



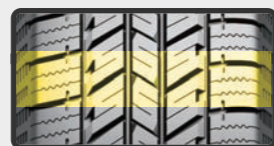
HT01

High performance SUV and light truck tire with excellent durability and handling efficiency.



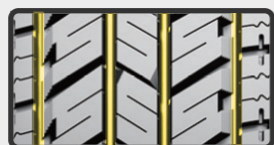
PATTERN DESIGN & FEATURES

Product Design	Product Performance
----------------	---------------------



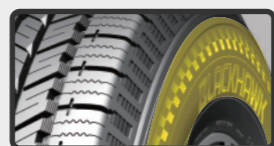
Tread Formula

Special tread formula improves abrasion resistance and grip for better handling.



Safety

Wide tread grooves and small cut block grooves ensure a safe ride by effectively draining water for better traction.



Sidewall Design

The sidewall structure and ladder-like grooves on the shoulder allow the tire to conquer any challenge on both paved and un-paved roads.



SIZES



RIM	SIZE	PR	LI	SS	XL OR NOT	SIDEWALL	STANDARD RINM	UTQG	MAX LOAD (kg)	PRESSURE (kpa)	PLANT
15	205/70R15		96	S		BSW	6J	700/A/B	710	300	CN
15	225/70R15		100	S		BSW	6 1/2J	700/A/B	800	300	CN/VN
15	215/75R15		100	T		BSW	6J	700/A/B	800	300	CN
15	235/75R15		105	S		BSW	6 1/2J	700/A/B	925	300	CN/VN
16	215/65R16		98	T		BSW	6 1/2J	700/A/B	750	300	CN/VN
16	235/65R16C	10PR	121/119	R		BSW	7J		1450/1360	575	VN
16	215/70R16		100	H		BSW	6 1/2J	700/A/B	800	300	CN
16	215/70R16		100	T		BSW	6 1/2J	700/A/B	800	300	CN/VN
16	225/70R16		103	S		BSW	6 1/2J	700/A/B	875	300	CN/VN
16	235/70R16		106	H		BSW	7J	700/A/B	950	300	CN
16	235/70R16		106	T		BSW	7J	700/A/B	950	300	CN/VN/KH
16	245/70R16		107	S		BSW	7J	700/A/A	975	300	CN/VN
16	255/70R16		111	T		BSW	7 1/2J	700/A/B	1090	300	CN/VN
16	265/70R16		112	T		BSW	8J	700/A/B	1120	300	CN/VN
16	225/75R16		104	S		BSW	6J	700/A/B	900	300	CN/VN
16	LT225/75R16	10PR	115/112	S		BSW	6J		1215/1120	550	VN
16	245/75R16		111	T		BSW	7J	700/A/B	1090	300	CN/VN
16	LT245/75R16	10PR	120/116	Q		BSW	7J		1400/1250	550	CN
16	LT245/75R16	10PR	120/116	S		BSW	7J		1400/1250	550	VN
16	265/75R16		116	T		BSW	7 1/2J	700/A/B	1250	300	CN/VN
16	LT265/75R16	10PR	123/120	S		BSW	7 1/2J		1550/1400	550	VN
16	LT215/85R16	10PR	115/112	S		BSW	6J		1215	550	VN
16	LT235/85R16	10PR	120/116	S		BSW	6 1/2J		1400/1250	550	CN/VN
17	225/60R17		99	H		BSW	6 1/2J	700/A/A	775	300	CN/VN
17	225/65R17		102	S		BSW	6 1/2J	700/A/B	850	300	VN/KH
17	225/65R17		102	T		BSW	6 1/2J	700/A/B	850	300	CN
17	235/65R17		104	S		BSW	7J	700/A/B	900	300	CN/VN
17	235/65R17		104	T		BSW	7J	700/A/B	900	300	CN/VN
17	245/65R17		107	T		BSW	7J	700/A/B	975	300	CN/VN
17	265/65R17		112	H		BSW	8J	700/A/B	1120	300	CN/VN
17	265/65R17		112	T		BSW	8J	700/A/B	1120	300	CN
17	245/70R17		110	T		BSW	7J	700/A/B	1060	300	CN/VN
17	LT245/70R17	10PR	119/116	R		BSW	7J		1360/1250	550	VN
17	265/70R17		115	T		BSW	8J	700/A/B	1215	300	CN/VN
17	LT265/70R17	10PR	121/118	Q		BSW	8J		1450/1320	550	CN/VN
17	235/75R17		109	S		BSW	6 1/2J	700/A/B	1030	300	CN/VN
17	LT245/75R17	10PR	121/118	S		BSW	7J		1450	550	VN
17	LT235/80R17	10PR	120/117	R		BSW	6 1/2J		1400/1285	550	VN
18	235/55R18		100	T		BSW	7 1/2J	700/A/A	800	300	CN/VN
18	235/55R18		100	V		BSW	7 1/2J	700/A/A	800	300	CN
18	235/60R18		107	V	XL	BSW	7J	700/A/B	975	340	VN
18	245/60R18		105	H		BSW	7J	700/A/B	925	300	CN/VN
18	265/60R18		110	H		BSW	8J	700/A/B	1060	300	CN
18	265/60R18		110	T		BSW	8J	700/A/B	1060	300	CN/VN
18	235/65R18		106	T		BSW	7J	700/A/B	950	300	VN
18	255/65R18		111	S		BSW	7 1/2J	700/A/B	1090	300	VN
18	265/65R18		114	H		BSW	8J	700/A/B	1180	300	VN
18	275/65R18		116	T		BSW	8J	700/A/B	1250	300	CN/VN
18	255/70R18		113	T		BSW	7 1/2J	700/A/B	1150	300	CN/VN
19	225/55R19		99	V		BSW	7J	700/A/B	775	300	VN
19	235/55R19		101	V		BSW	7 1/2J	700/A/B	825	300	VN
19	245/55R19		103	H		BSW	7 1/2J	700/A/B	875	300	VN
20	275/45R20		110	H	XL	BSW	9J	700/A/A	1060	340	CN/VN
20	255/50R20		105	H		BSW	8J	700/A/B	925	300	VN
20	265/50R20		107	V		BSW	8 1/2J	700/A/B	975	300	VN
20	275/55R20		113	H		BSW	8 1/2J	700/A/A	1150	300	CN/VN
20	275/60R20		115	S		BSW	8J	700/A/B	1215	300	CN/VN

HA01

An all-terrain off-road tire suitable for pickup trucks and SUVs, boasting strong off-road performance while also offering great on-road handling and driving comfort.

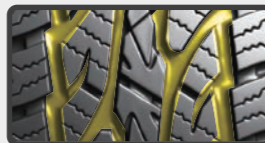


PATTERN DESIGN & FEATURES

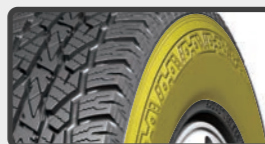
Product Design Product Performance



Tread Compound
The tread compound is specially designed to improve grip and handling on wet and dry surfaces, while also improving tread life.



Noise Emission
Unique pattern design enhances driving stability and effectively reduces noise for a greater driving experience.



Sidewall Design
The sidewall is designed to withstand scratches and bumps common in off-road applications.



SIZES



RIM	SIZE	PR	LI	SS	XL OR NOT	SIDEWALL	STANDARD RINM	UTQG	MAX LOAD (kg)	PRESSURE (kpa)	PLANT
15	LT215/75R15	6PR	100/97	S		OWL	6J		800/730	350	CN
15	LT225/75R15	6PR	102/99	S		OWL	6J		850/775	350	CN
15	LT235/75R15	6PR	104/101	S		OWL	6 1/2J		900/825	350	CN
15	235/75R15		109	S	XL	OWL	6 1/2J	700/A/B	1030	340	CN
15	31x10.50R15LT	6PR	109	S		OWL	8 1/2J		1030	350	CN
16	215/70R16		100	S		OWL	6 1/2J	700/A/B	800	300	CN
16	LT235/70R16	6PR	104/101	T		OWL	7J		900/825	350	CN
16	235/70R16		106	S		OWL	7J	700/A/B	950	300	CN
16	LT245/70R16	6PR	106/103	T		OWL	7J		950/875	350	CN
16	245/70R16		107	S		OWL	7J	700/A/B	975	300	CN
16	255/70R16		111	S		OWL	7 1/2J	700/A/B	1090	300	CN
16	265/70R16		112	S		OWL	8J	700/A/B	1120	300	CN
16	265/70R16		112	T		OWL	8J	700/A/B	1120	300	CN
16	LT265/70R16	8PR	117/114	S		OWL	8J		1285/1180	450	CN
16	LT225/75R16	10PR	115/112	S		OWL	6J		1215/1120	550	CN
16	LT245/75R16	10PR	120/116	Q		OWL	7J		1400/1250	550	CN
16	LT265/75R16	10PR	123/120	Q		OWL	7 1/2J		1550/1400	550	CN
16	LT285/75R16	10PR	126/123	R		OWL	8J		1700/1550	550	CN
16	LT235/85R16	10PR	120/116	S		OWL	6 1/2J		1400/1250	550	CN
17	225/65R17		102	T		OWL	6 1/2J	700/A/B	850	300	CN
17	235/65R17		104	T		OWL	7J	700/A/B	900	300	CN
17	245/65R17		107	S		OWL	7J	700/A/B	975	300	CN
17	LT265/65R17	10PR	120/117	R		OWL	8J		1400/1285	550	CN
17	285/65R17		116	H		OWL	8 1/2J	700/A/B	1250	300	CN
17	245/70R17		110	S		OWL	7J	700/A/B	1060	300	CN
17	LT245/70R17	10PR	119/116	R		OWL	7J		1360/1250	550	CN
17	265/70R17		115	T		OWL	8J	700/A/B	1215	300	CN
17	LT265/70R17	10PR	121/118	Q		OWL	8J		1450/1320	550	CN
17	LT285/70R17	10PR	121/118	S		OWL	8 1/2J		1450/1320	550	CN
17	LT235/80R17	10PR	120/117	R		OWL	6 1/2J		1400/1285	550	CN
18	245/60R18		105	T		OWL	7J	700/A/B	925	300	CN
18	265/60R18		110	T		OWL	8J	700/A/B	1060	300	CN
18	255/65R18		111	S		OWL	7 1/2J	700/A/B	1090	300	CN
18	275/65R18		116	T		OWL	8J	700/A/B	1250	300	CN
18	LT275/65R18	10PR	123/120	S		OWL	8J		1550/1400	550	CN
20	265/50R20		111	T	XL	BSW	8 1/2J	700/A/A	1090	340	CN
20	265/50R20		111	T	XL	OWL	8 1/2J	700/A/A	1090	340	CN
20	275/55R20		117	H	XL	OWL	8 1/2J	700/A/A	1285	340	CN
20	LT275/65R20	10PR	126/123	S		OWL	8J		1700/1550	550	CN

HA11

An all-terrain off-road tire suitable for pickup trucks and SUVs, boasting strong off-road performance while also offering great on-road handling and driving comfort. All HA11 LT sizes are 3PMSF certified to ensure safer driving in extreme winter weather conditions.



PATTERN DESIGN & FEATURES

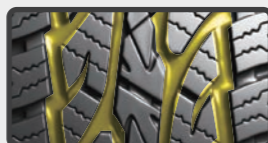
Product Design

Product Performance



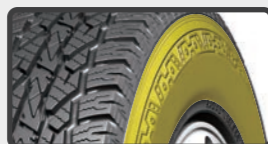
Tread Compound

The tread compound is designed to improve grip, handling on wet and dry surfaces, and also offer a longer tire life.



Tread Pattern

The unique pattern design enhances driving stability and effectively reduces noise for a greater driving experience.



Sidewall Design

The sidewall is designed to withstand scratches and bumps common in off-road applications.



SIZES



RIM	SIZE	PR	LI	SS	XL OR NOT	SIDEWALL	STANDARD RINM	UTQG	MAX LOAD (kg)	PRESSURE (kpa)	PLANT
15	235/75R15		109	S	XL	OWL	6 1/2J	500/A/B	1030	340	VN
15	LT235/75R15	8PR	110/107	S		OWL	6 1/2J		1060	450	VN
15	31x10.50R15LT	6PR	109	S		OWL	8 1/2J		1030	350	VN
16	235/70R16		106	S		OWL	7J	500/A/B	950	300	VN
16	265/70R16		112	T		OWL	8J	500/A/B	1120	300	VN
16	LT225/75R16	10PR	115/112	S		BSW	6J		1215/1120	550	VN
16	245/75R16		111	S		OWL	7J	500/A/B	1090	300	VN
16	LT245/75R16	10PR	120/116	S		BSW	7J		1380/1260	550	VN
16	265/75R16		116	S		OWL	7 1/2J	500/A/B	1250	300	VN
16	LT265/75R16	10PR	123/120	S		OWL	7 1/2J		1550/1400	550	VN
16	LT285/75R16	10PR	126/123	S		OWL	8J		1700/1550	550	VN
16	LT235/85R16	10PR	120/116	S		BSW	6 1/2J		1380/1260	550	VN
17	245/65R17		107	S		OWL	7J	500/A/B	975	300	VN
17	265/65R17		112	S		OWL	8J	500/A/B	1120	300	VN
17	LT245/70R17	10PR	119/116	S		OWL	7J		1360/1250	550	VN
17	255/70R17		112	S		OWL	7 1/2J	500/A/B	1120	300	VN
17	265/70R17		115	S		OWL	8J	500/A/B	1215	300	VN
17	LT265/70R17	10PR	121/118	S		OWL	8J		1450/1320	550	VN
17	LT285/70R17	10PR	121/118	S		OWL	8 1/2J		1450/1320	550	VN
17	LT245/75R17	10PR	121/118	S		OWL	7J		1450/1320	550	VN
17	LT235/80R17	10PR	120/117	R		OWL	6 1/2J		1400/1285	550	VN
18	275/65R18		116	T		OWL	8J	500/A/B	1250	300	VN
18	LT275/65R18	10PR	123/120	S		OWL	8J		1550/1400	550	VN
18	LT265/70R18	10PR	124/121	R		BSW	8J		1600/1450	550	VN
18	LT275/70R18	10PR	125/122	R		OWL	8J		1650/1500	550	VN
20	275/55R20		117	T	XL	BSW	8 1/2J	500/A/B	1285	340	VN
20	275/60R20		115	T		BSW	8J	500/A/B	1215	300	VN
20	LT275/65R20	10PR	126/123	S		BSW	8J		1700/1550	550	VN

HM01

The HM01 is specially designed for cross-country enthusiasts.



PATTERN DESIGN & FEATURES

Product Design

Product Performance



Strengthened Carcass

The three ply carcass makes this tire extremely strong and capable of handling strong impacts.



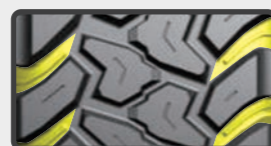
Shoulder Blocks

The large shoulder block design vastly enhances the handling performance on muddy and rocky roads.



Sidewall Design

The shield-like design extending up from the sidewall improves traction and further protects the sidewall from damage.



Shoulder Grooves

Wide and deep shoulder grooves effectively eject mud and rocks while also improving grip in rugged terrain.

SIZES



RIM	SIZE	PR	LI	SS	XL OR NOT	SIDEWALL	STANDARD RINM	UTQG	MAX LOAD (kg)	PRESSURE (kpa)	PLANT
15	LT235/75R15	6PR	104/101	Q		OWL	6 1/2J		900/825	350	CN
15	30x9.50R15LT	6PR	104	Q		OWL	7 1/2J		900	350	CN
15	33x12.50R15LT	6PR	108	Q		OWL	10J		1000	250	CN
15	31x10.50R15LT	6PR	109	Q		OWL	8 1/2J		1030	350	CN
15	35x12.50R15LT	6PR	113	Q		OWL	10J		1150	250	CN
16	LT245/75R16	10PR	120/116	Q		OWL	7J		1380/1260	550	CN
16	LT265/75R16	10PR	123/120	Q		OWL	7 1/2J		1550/1400	550	CN
16	LT235/85R16	10PR	120/116	Q		OWL	6 1/2J		1380/1260	550	CN
17	LT265/65R17	10PR	120/117	Q		OWL	8J		1400/1285	550	CN
17	LT265/70R17	10PR	121/118	Q		OWL	8J		1450/1320	550	CN
17	LT285/70R17	10PR	121/118	Q		OWL	8 1/2J		1450/1320	550	CN
17	33x12.50R17LT	8PR	114	Q		OWL	10J		1180	350	CN
17	35x12.50R17LT	10PR	121	Q		OWL	10J		1450	450	CN
18	33x12.50R18LT	10PR	118	Q		BSW	10J		1320	450	CN
18	35x12.50R18LT	10PR	123	Q		BSW	10J		1550	450	CN
20	LT305/55R20	10PR	121/118	Q		BSW	9 1/2J		1450/1320	450	CN
20	33x12.50R20LT	10PR	114	Q		BSW	10J		1180	450	CN
20	35x12.50R20LT	10PR	121	Q		BSW	10J		1450	450	CN

HLO2

Long-running tire with flexible handling designed specifically for light trucks.



PATTERN DESIGN & FEATURES

Product Design	Product Performance
	<p>Carrying Capacity This tire is designed with a reinforced carcass to improve its load bearing capability.</p>
	<p>Wet Performance Three main grooves effectively eject water for improved grip on wet roads.</p>
	<p>Tread Life The tread composition and pattern design is optimized to improve wear resistance for a longer service life.</p>



SIZES



RIM	SIZE	PR	LI	SS	XL OR NOT	SIDEWALL	STANDARD RINM	UTQG	MAX LOAD (kg)	PRESSURE (kpa)	PLANT
15	6.50R15LT	10PR	106/101	N		BSW	5.50F		950/825	560	CN
16	6.50R16LT	10PR	107/102	N		BSW	5.50F		975/850	560	CN
16	7.00R16LT	12PR	115/110	N		BSW	5.50F		1215/1060	670	CN





HLO3

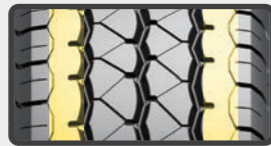
Specially designed pattern for commercial light trucks, minivans, and minibuses that offers outstanding handling on wet surfaces as well as excellent high speed durability.



PATTERN DESIGN & FEATURES

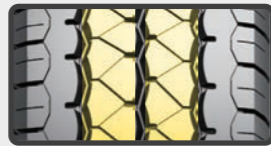
Product Design

Product Performance



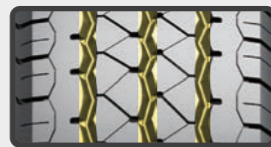
Driving Comfort

The tread has a varied pitch design created to reduce noise and allow for a better driving experience.



Tread Pattern

Original pattern design ensures excellent performance and greater driving comfort on wet and dry roads.



Tread Design

Wide and deep grooves increase wear resistance, efficiently drain water, and provide greater handling stability.



SIZES



RIM	SIZE	PR	LI	SS	XL OR NOT	SIDEWALL	STANDARD RINM	UTQG	MAX LOAD (kg)	PRESSURE (kpa)	PLANT
12	145R12C	8PR	86/84	P		BSW	4.00B		530/500	450	CN
12	155R12C	8PR	88/86	P		BSW	4.50B		560/530	450	CN
13	165/70R13C	6PR	88/86	Q		BSW	5.00B		560/530	375	CN
13	155R13C	6PR	85/83	Q		BSW	4.50B		515/487	350	CN
13	165R13C	8PR	94/93	S		BSW	4.50B		670/650	450	CN
13	175R13C	8PR	97/95	S		BSW	5.00B		730/690	450	CN
14	175/65R14C	6PR	90/88	T		BSW	5J		600/560	375	CN
14	175/70R14C	6PR	95/93	Q		BSW	5J		690/650	375	CN
14	205/75R14C	8PR	109/107	Q		WR	5 1/2J		1030/975	475	CN
14	175R14C	8PR	99/98	Q		BSW	5J		775/750	450	CN
14	185R14C	8PR	102/100	Q		BSW	5 1/2J		850/800	450	CN
14	195R14C	8PR	106/104	Q		BSW	5 1/2J		950/900	450	CN
14	195R14C	8PR	106/104	Q		WR	5 1/2J		950/900	450	CN
14	205R14C	8PR	109/107	R		BSW	6J		1030/975	450	CN
15	205/65R15C	6PR	102/100	R		BSW	6J		850/800	375	CN
15	195/70R15C	8PR	104/102	R		BSW	6J		900/850	450	CN
15	205/70R15C	8PR	106/104	R		BSW	6J		950/900	450	CN
15	205/70R15C	10PR	109/107	R		BSW	6J		1030/975	550	CN
15	215/70R15C	8PR	109/107	S		BSW	6 1/2J		1030/975	450	CN
15	225/70R15C	8PR	112/110	R		BSW	6 1/2J		1120/1060	450	CN
15	185R15C	8PR	103/102	R		BSW	5 1/2J		875/850	450	CN
15	195R15C	8PR	106/104	R		BSW	5 1/2J		950/900	450	CN
15	195R15C	8PR	106/104	R		WR	5 1/2J		950/900	450	CN
15	215R15C	8PR	109/107	R		WR	6J		1030/975	450	CN
16	195/60R16C	6PR	99/97	T		BSW	6J		775/730	375	CN
16	215/60R16C	8PR	108/106	T		BSW	6 1/2J		1000/950	475	CN
16	195/65R16C	8PR	104/102	R		BSW	6J		900/850	475	CN
16	205/65R16C	8PR	107/105	R		BSW	6J		975/925	475	CN
16	215/65R16C	8PR	109/107	R		BSW	6 1/2J		1030/975	475	CN
16	225/65R16C	8PR	112/110	R		BSW	6 1/2J		1120/1060	475	CN
16	235/65R16C	8PR	115/113	R		BSW	7J		1215/1150	475	CN
16	215/70R16C	6PR	108/106	Q		BSW	6 1/2J		1000/950	375	CN
16	185/75R16C	8PR	104/102	R		BSW	5J		900/850	475	CN
16	195/75R16C	8PR	107/105	R		BSW	5 1/2J		975/925	475	CN
16	195/75R16C	10PR	110/108	R		BSW	5 1/2J		1060/1000	525	CN
16	205/75R16C	8PR	110/108	R		BSW	5 1/2J		1060/1000	475	CN
16	205/75R16C	10PR	113/111	R		BSW	5 1/2J		1150/1090	525	CN
16	215/75R16C	10PR	116/114	R		BSW	6J		1250/1180	525	CN
16	225/75R16C	10PR	121/120	R		BSW	6J		1450/1400	575	CN
16	175R16C	8PR	101/99	R		BSW	5J		825/775	450	CN
16	205R16C	8PR	110/108	R		BSW	6J		1060/1000	450	CN
17	225/70R17C	6PR	112/110	R		BSW	6 1/2J		1120/1060	375	CN

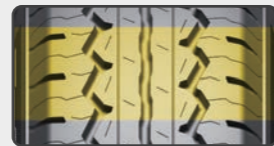
HC31

The HC31 is an economic pattern offering a deep tread and improved contour design for overall improved performance and service life.



PATTERN DESIGN & FEATURES

Product Design Product Performance



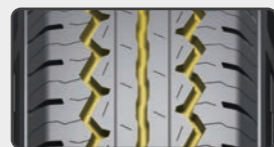
Overall Performance

The tread is designed to increase ground contact area for improved handling and durability.



Service Life

The optimized tread contour and internal structure design effectively reduce heat buildup to effectively improve service life.



Safety

Tread grooves effectively eject water and reduce stone retention for improved grip, driving comfort, and overall safety.



SIZES



RIM	SIZE	PR	LI	SS	XL OR NOT	SIDEWALL	STANDARD RINM	UTQG	MAX LOAD (kg)	PRESSURE (kpa)	PLANT
14	185R14C	8PR	102/100	Q		BSW	5 1/2J		850/800	450	CN
14	185R14C	8PR	102/100	Q		WR	5 1/2J		850/800	450	CN
14	195R14C	8PR	106/104	Q		BSW	5 1/2J		950/900	450	CN
14	195R14C	8PR	106/104	Q		WR	5 1/2J		950/900	450	CN
15	195R15C	8PR	106/104	R		BSW	5 1/2J		950/900	450	CN
15	195R15C	8PR	106/104	R		WR	5 1/2J		950/900	450	CN
15	205/70R15C	8PR	106/104	R		BSW	6J		950/900	450	CN
15	205/70R15C	8PR	106/104	R		WR	6J		950/900	450	CN

HW06

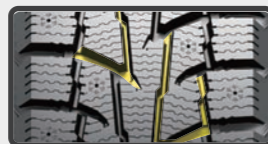
The z-shaped main groove and sipe pattern improve traction on ice and snow. The quantity and position of the studs strengthen tire grip for improved safety in winter.



PATTERN DESIGN & FEATURES

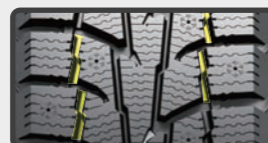
Product Design

Product Performance



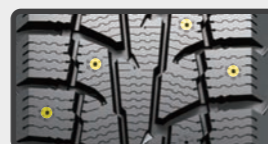
Winter Performance

The Z-shaped main grooves improve traction, prevent skidding, and reduce noise while driving on ice and snow.



Groove Design

Jagged groove edges bite into ice and snow for improved grip and traction performance.



Stud Arrangement

The number and locations of studs are designed to maximize tire grip and improve skid resistance.



SIZES



RIM	SIZE	PR	LI	SS	XL OR NOT	SIDEWALL	STANDARD RINM	UTQG	MAX LOAD (kg)	PRESSURE (kpa)	PLANT
15	235/75R15		105	S		BSW	6 1/2J		925	300	CN
16	225/70R16		103	S		BSW	6 1/2J		875	300	CN
16	235/70R16		106	S		BSW	7J		950	300	CN
16	245/70R16		107	S		BSW	7J		975	300	CN
16	LT225/75R16	10PR	115/112	Q		BSW	6J		1215/1120	550	CN
16	245/75R16		111	S		BSW	7J		1090	300	CN
16	LT245/75R16	10PR	120/116	Q		BSW	7J		1380/1260	550	CN
17	245/65R17		107	S		BSW	7J		975	300	CN
17	245/70R17		110	S		BSW	7J		1060	300	CN
17	LT245/70R17	10PR	119/116	Q		BSW	7J		1360/1250	550	CN
17	265/70R17		115	S		BSW	8J		1215	300	CN
17	LT265/70R17	10PR	121/118	Q		BSW	8J		1450/1320	550	CN
17	LT245/75R17	10PR	121/118	R		BSW	7J		1450/1320	550	CN
18	235/55R18		100	T		BSW	7 1/2J		800	300	CN
18	255/55R18		105	T		BSW	8J		925	300	CN
18	235/60R18		107	T	XL	BSW	7J		975	340	CN
18	245/60R18		105	T		BSW	7J		925	300	CN
18	265/60R18		110	T		BSW	8J		1060	300	CN
18	235/65R18		106	T		BSW	7J		950	300	CN
18	275/65R18		116	S		BSW	8J		1250	300	CN
18	LT275/65R18	10PR	123/120	R		BSW	8J		1550/1400	550	CN
18	255/70R18		113	S		BSW	7 1/2J		1150	300	CN
18	LT275/70R18	10PR	125/122	R		BSW	8J		1650/1500	550	CN
19	235/45R19		95	H		BSW	8J		690	300	CN
19	225/55R19		99	H		BSW	7J		775	300	CN
19	235/55R19		101	H		BSW	7 1/2J		825	300	CN
19	245/55R19		103	T		BSW	7 1/2J		875	300	CN
20	245/50R20		102	H		BSW	7 1/2J		850	300	CN
20	275/55R20		117	S	XL	BSW	8 1/2J		1285	340	CN
20	275/60R20		119	S	XL	BSW	8J		1360	340	CN

HW07

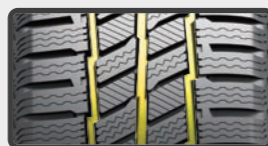
A winter tire specifically designed for commercial light trucks.



PATTERN DESIGN & FEATURES

Product Design

Product Performance



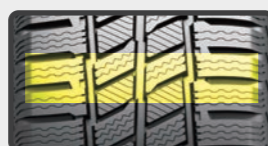
Handling

The wide and jagged groove design efficiently drains snow and water to improve handling in winter weather.



Tread Design

The intersecting blocks, grooves, and sipes allow for more effective braking on ice and snow.



Comfortable Ride

The tread width and block pattern ensure secure contact with the road surface to improve driving comfort.



Grip

The precision cut sipes enhance grip on ice and snow to allow for a safer driving experience.

SIZES



RIM	SIZE	PR	LI	SS	XL OR NOT	SIDEWALL	STANDARD RINM	UTQG	MAX LOAD (kg)	PRESSURE (kpa)	PLANT
14	185R14C	8PR	102/100	R		BSW	5 1/2J		850/800	450	CN
14	195R14C	8PR	106/104	R		BSW	5 1/2J		950/900	450	CN
15	195/70R15C	8PR	104/102	S		BSW	6J		900/850	450	CN
15	205/70R15C	8PR	106/104	S		BSW	6J		950/900	450	CN
15	215/70R15C	10PR	113/111	S		BSW	6 1/2J		1150/1090	525	CN
15	225/70R15C	8PR	112/110	S		BSW	6 1/2J		1120/1060	450	CN
15	195R15C	8PR	106/104	R		BSW	5 1/2J		950/900	450	CN
16	195/65R16C	8PR	104/102	T		BSW	6J		900/850	475	CN
16	205/65R16C	8PR	107/105	T		BSW	6J		975/925	475	CN
16	215/65R16C	8PR	109/107	T		BSW	6 1/2J		1030/975	475	CN
16	225/65R16C	8PR	112/110	T		BSW	6 1/2J		1120/1060	475	CN
16	235/65R16C	8PR	115/113	R		BSW	7J		1215/1150	475	CN
16	185/75R16C	8PR	104/102	R		BSW	5J		900/850	475	CN
16	195/75R16C	8PR	107/105	R		BSW	5 1/2J		975/925	475	CN
16	205/75R16C	10PR	113/111	R		BSW	5 1/2J		1150/1090	525	CN
16	215/75R16C	10PR	116/114	R		BSW	6J		1250/1180	525	CN
16	225/75R16C	10PR	118/116	R		BSW	6J		1320/1250	525	CN



Important Tips for Optimal Tire Performance :

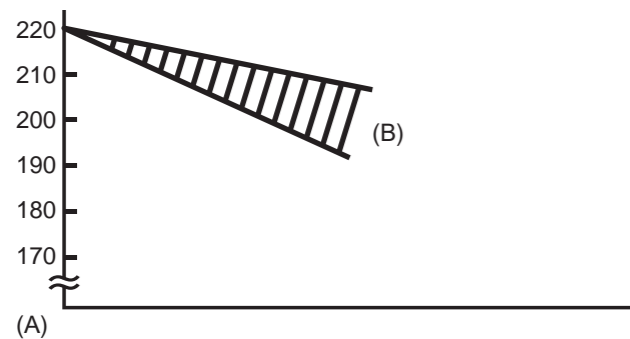
- 1 Maintain optimum air pressure
- 2 Inspect tread grooves to ensure tires are safe and legal
- 3 Visually check for tire damage

Ensure you check your tires once a month and before long trips to maintain performance and ensure safety.

Why is it important I have the correct tire pressure?

A tire at optimum air pressure should will ensure more safety, provide greater driving performance, improve tire life and reduce fuel consumption.

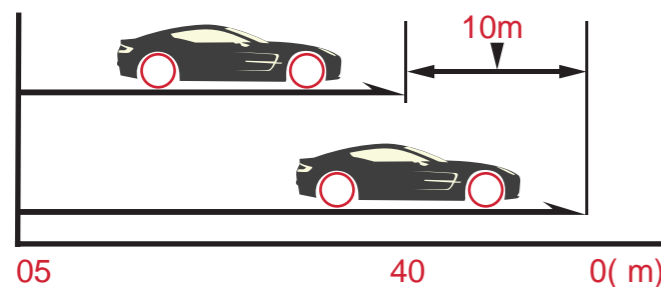
Tire air pressure decreases naturally (little by little). It is generally accepted that air pressure in tires on a passenger car decreases by 5–10% (10–20kPa) every month.



Tire size: 195/65R 15
 Starting pressure: 220kPa (100kPa=1.0kgf/cm²)
 (A) Air pressure (kPa)
 (B) Decreases by 10-20kPa a month

Dangers of Using Worn Tire

Worn tires need a longer stopping distance on wet roads.



At the same speed (80km/h) and from the same braking point, there is a difference of 10 meters!
 (A) New tire
 (B) Worn tire (worn out to 1.6mm)

Why is it Important I Check for Tire Wear?

The deeper the groove, which is on the surface of the tire, the more grip a tire will have. As your tread pattern wears over time, the grip will begin to decrease. Never use a tire where even just one tread wear indicator is exposed.

TWI:Tread Wear Indicator(1.6mm)



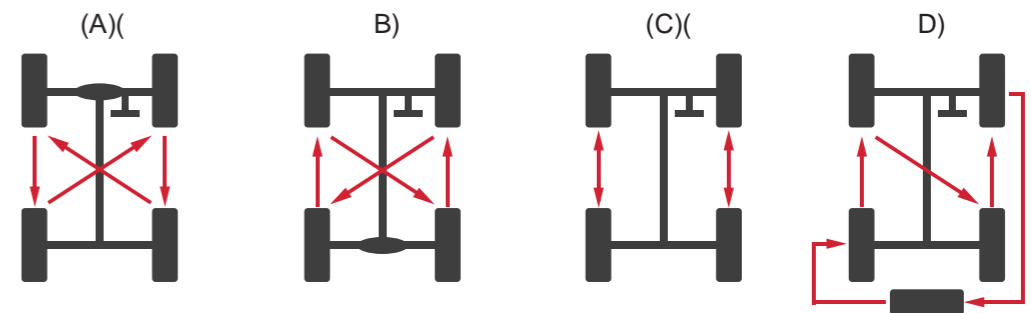
Indicator Mark: Triangle Symbol "△"

<Tire Tread Wear Indicator >

What are the advantages of tire rotation?

- 1 Help Prevent Uneven Tread Wear
- 2 Extension of Tire Service Life (money in your wallet)
- 3 Averaging of Tire Fatigue

Note: The front-wheel tires of an FF vehicle wear two or three times faster than the rear-wheel tires because the front-wheel tires function for both driving and steering.



Examples of Tire Rotation

(A) FF Vehicle (B) FR Vehicle (C) Tires with Directional Patterns (D) Spare Tire Included

BLACKHAWK

BLACKHAWK Headquarters

No. 43 Zhengzhou Road, Shibei District, Qingdao, China

REV 23.01